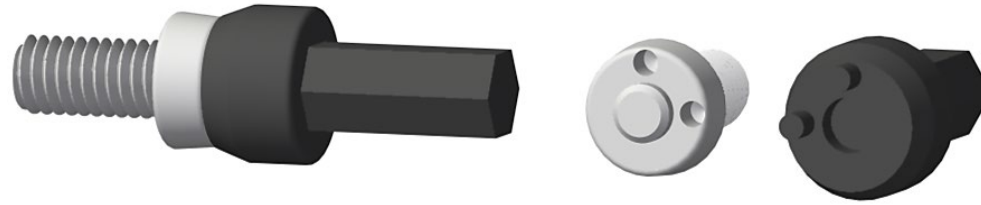


# HOW TO SECURE THE SOLAR LIGHT HEAD LUMINAIRE TO THE POLE



1. Install the Solar Light Head into the pole/mount pole section until the Solar Light Head spun collar is sitting flush with the top edge of the pole
2. Turn the Solar Light Head until you can see the internal brass threads in the moulding have lined up horizontally with the counter bored holes in the pole
  - a. You will notice the internal brass thread is sitting slight above the top of the counter bored hole
3. Apply downward pressure to the top dome section of the Solar Light Head, this will line up the thread vertically now.
  - a. This has now created compression of the spun collar O-Ring which creates a watertight seal
4. **SECURITY FASTENERS MUST BE TENSIONED IN THE SAME ORDER:**

## THIS STEP MUST BE COMPLETED BY HAND TENSION ONLY

**STEP A:** Insert the M6 Security Fastener with the Security Driver Tool through the pole into the internal thread and tension until the Security Fastener head is above the external pole outer edge.

- Do this for each Security Fastener in order 1 to 4 as shown

## NOW USING A VARIABLE SPEED TORQUE GUN:

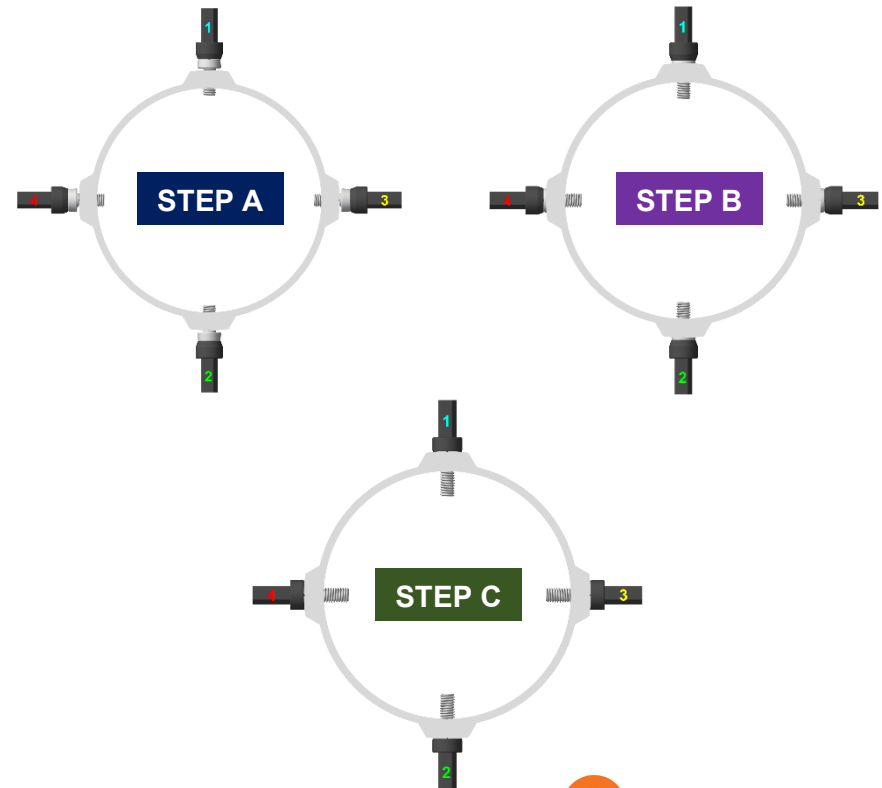
- **SPEED** - Low Speed Only
- **TORQUE** - Set to 13 "maximum"



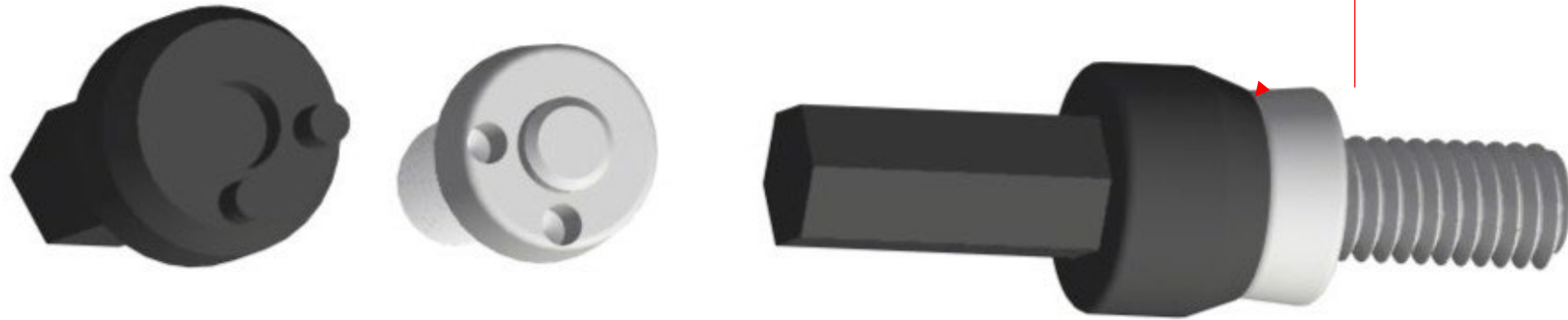
**STEP B:** Continue tensioning the Security Fastener in order 1 to 4 until the fastener head section **has just recessed into the counter bored hole**.

- This will create pressure down onto the O-Ring Seal

**STEP C:** Continue tensioning the Security Fastener in order 1 to 4 until the variable speed torque driver **CLUTCH RELEASES**. Then finally check tension by hand to ensure the Security Fasteners are **TIGHT AND FIRM** in place.



**USING 2 PIN SECURITY DRIVER BIT – MUST SIT FLAT**



**DRIVE SETTING - LOW SPEED**



**TORQUE SETTING MAXIMUM = 13**